

Foto 1

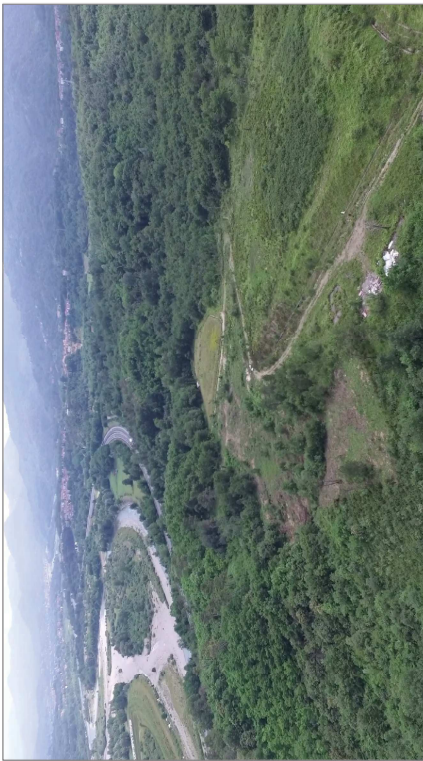


Foto 2

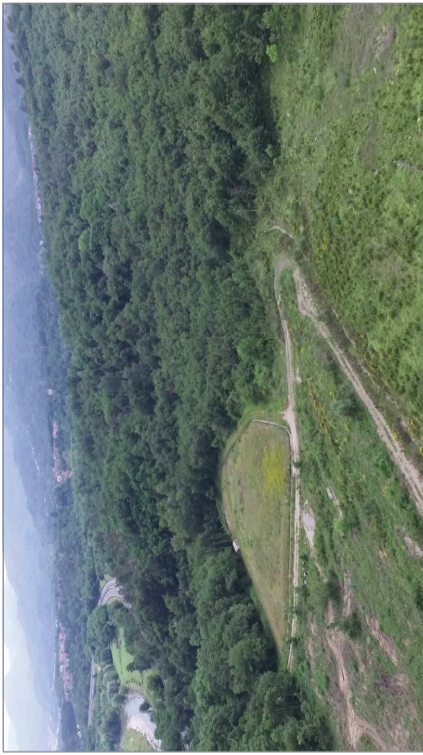


Foto 3

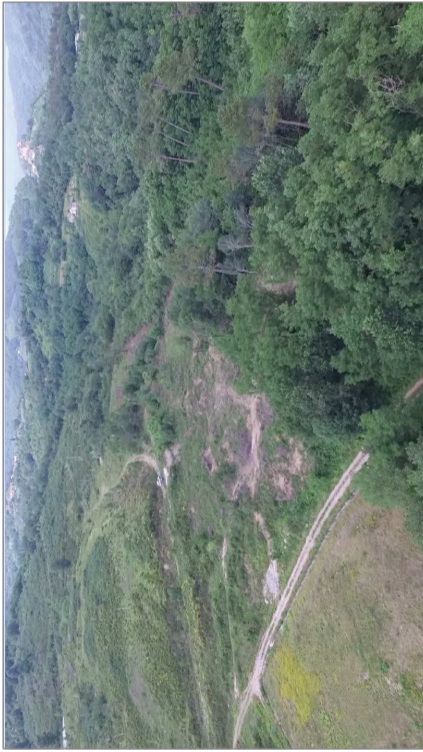


Foto 4



Foto 5



Foto 6



Foto 7



Foto 8



Foto 9

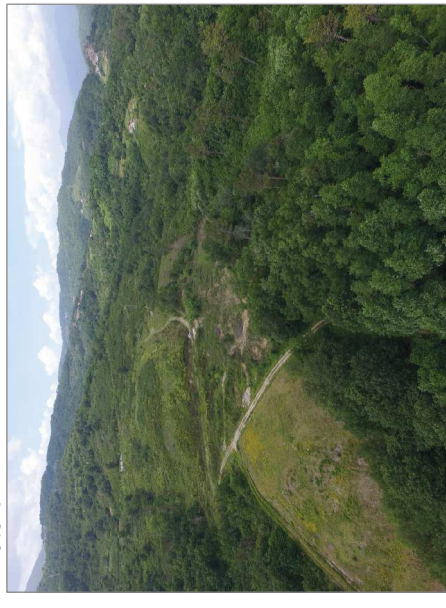


Foto 10

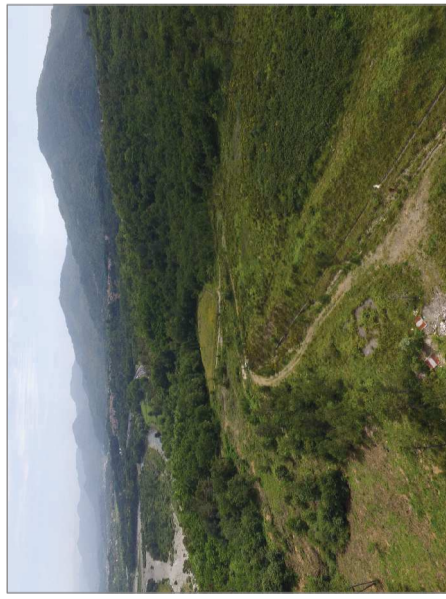


Foto 11

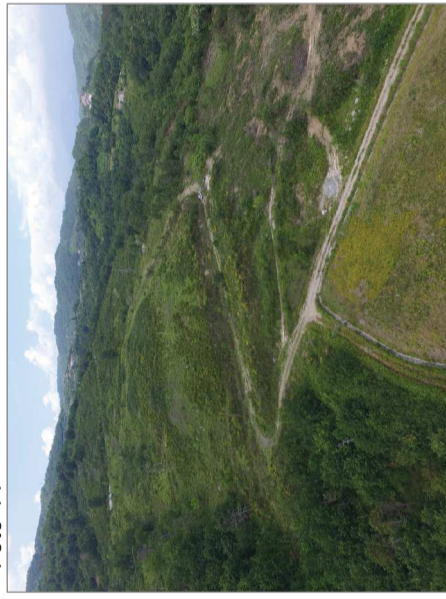


Foto 12



Foto 13



Foto 14



Foto 15



Foto 16



Foto 17

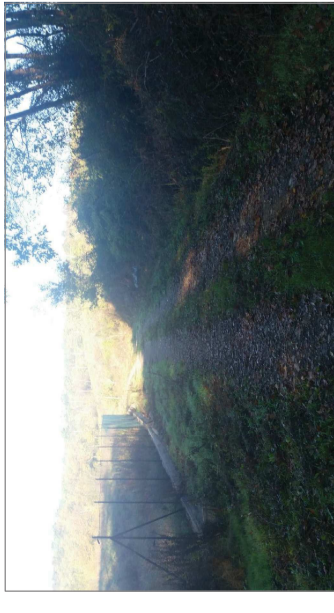


Foto 18



Foto 19



Foto 20



Foto 21

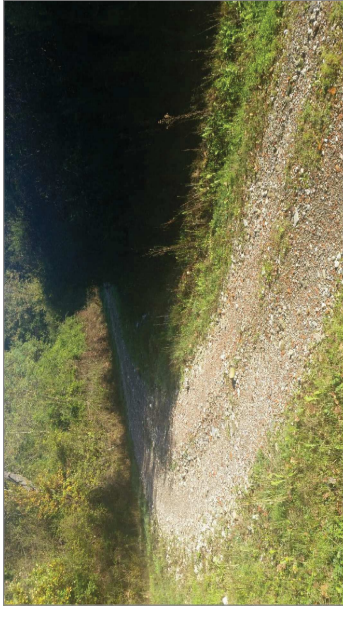


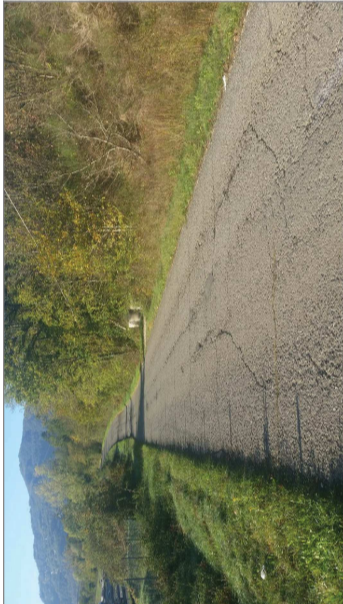
Foto 22



Foto 23



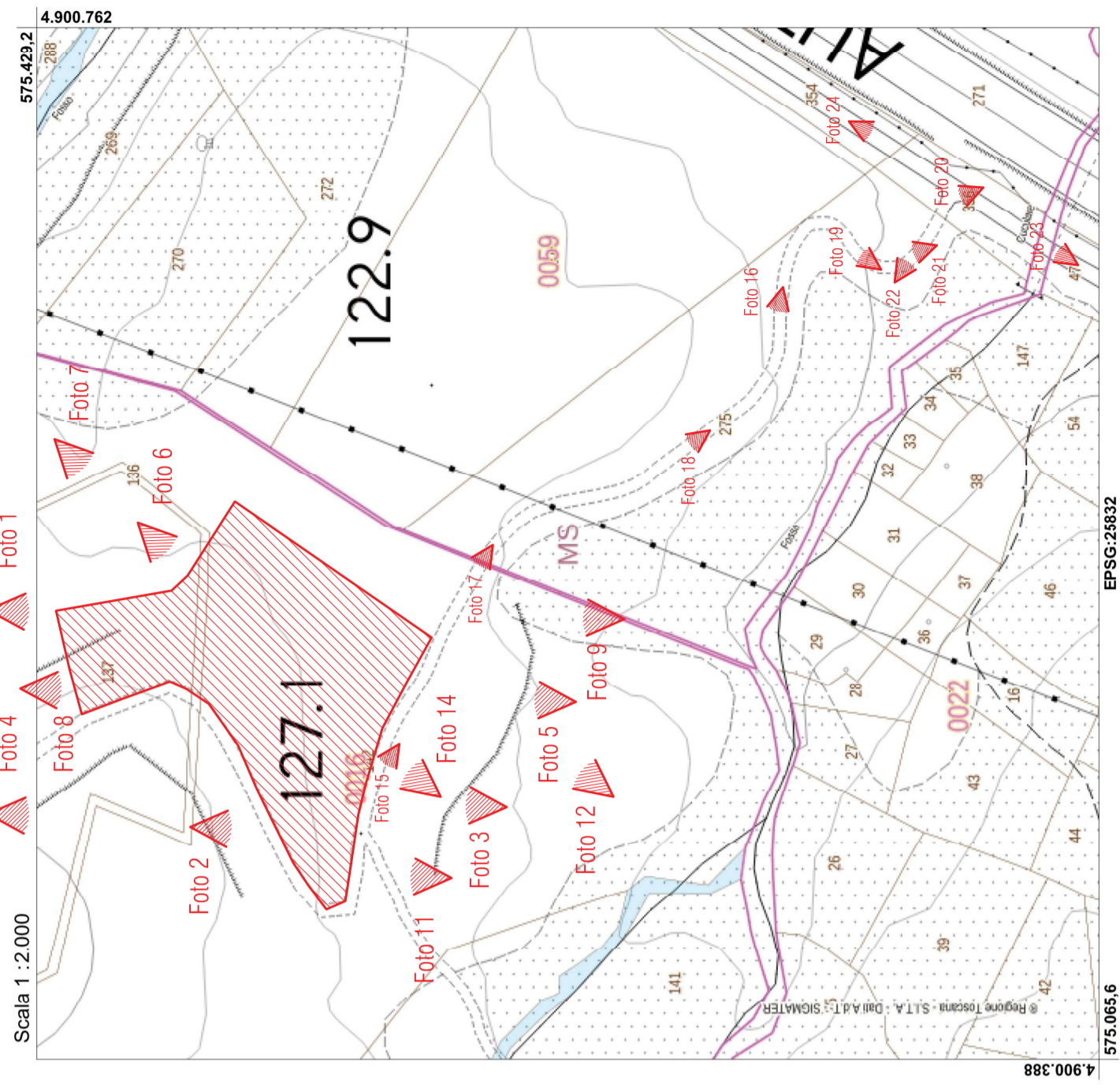
Foto 24



Regione Toscana



### Regione Toscana - SITA: Vincolo idrogeologico



## COMUNE DI TRESANA PROVINCIA DI MASSA CARRARA

### REALIZZAZIONE DI CAMPO DI TIRO DINAMICO SPORTIVO

Ingegnere **Matteo Bestazzoni**  
Via Garibaldi 16/bis - Corneta - 54012 Tresana MS  
matteo.bestazzoni@libero.it - tel.018747246

Geometra **Fabio Caselli**  
Via Gandhi n.8 - 54011 Aulla MS  
fabio.caselli@gmail.com - fax.01871851689 - tel.0187421716

ZHULCHYNKA LYUBOV

ELABORATI: **DOCUMENTAZIONE FOTOGRAFICA**

SCALA:  
FORM.: **A2**

TAV. **7**